

COUNTY COUNCIL LOCAL COMMITTEE FOR BARROW

Meeting date: 5 July 2022

From: Executive Director – Corporate, Customer and Community Services

BARROW AREA PLANNING REPORT

1.0 EXECUTIVE SUMMARY

1.1 *This report brings together information from across the Community teams including Community Development, Archives and libraries, and provides an update on work and agreed activity since the last meeting of the Committee.*

2.0 STRATEGIC PLANNING AND EQUALITY IMPLICATIONS

2.1 *The County Council's vision set out in the Council Plan 2018-2022 is to be "a Council that works with residents, businesses, communities and other organisations to deliver the best services possible within the available resources." The approach and work of the Local Committee directly contributes to this, and area based working, and shaping services locally is one of the key ways of delivering this vision.*

2.2 *The work of Barrow Local Committee, through its Area Plan and projects helps to achieve the Council Plan 2018-2022 outcomes, which are:*

- *People in Cumbria are healthy and safe*
- *People in Cumbria are well connected and thriving*
- *The economy in Cumbria is thriving and benefits everyone*

2.3 *The development, operation and monitoring of the Council Plan requires a focus on the Council's performance against the identified outcomes, increasingly understood through localities. Barrow Area Plan sets out three targeted priorities for the area, which are:*

- *Improving health and well-being and tackling poverty*
- *To support Cumbria's Early Help strategy which enables support for children, families, and young people*
- *Promoting sustainable economic growth and creating jobs.*

2.4 *The locally devolved funding is available for Local Committees to allocate within the area to support positive outcomes, targeted and mainstream, designed to improve outcomes for the communities of Barrow. This funding can be targeted to initiate new activity or to enhance/complement existing provision according to locally determined need.*

2.5 *Local Committee is mindful of equality issues and duly considers that its actions and decisions do not result in inequality of service provision or exclusion from participation. The work of Local Committee directly supports the Council's wider equalities agenda*This section should also identify any equality implications arising out of the Equality Impact Assessment and, where appropriate, how these will be addressed.*

3.0 RECOMMENDATION

3.1 *That Members note the updates in this report.*

3.2 *That Local Committee agree the request for £15,000 funding from its 0-19 services grants and £10,000 from community grants for Love Barrow Families for a satellite hub project at Brisbane Park Annex as outlined in paragraphs 4.69-78.*

3.3 *That Local Committee agrees £5,544 from its 0-19 services grants for Right2Work CIC towards supporting the young people's project as outlined in paragraphs 4.79-91.*

4.0 BACKGROUND

4.1 This report provides Members with an update of the work of Barrow Local Committee and the Community Services Teams since its meeting of 11 May 2022 and outlines provisional and actual expenditure against Local Committee's budget as of 21 June 2022.

4.2 The team continue to work to support and progress a range of work as outlined in this report. Members also continue to meet informally through virtual meetings to share information, discuss issues and recommend courses of action. In addition to the Informal Local Committee meetings there have been a number of other meetings / activities taking place since March including:

- 10th May – Barrow Early Early Help Task Group
- 20th May – Barrow Locality Children and Families Partnership
- 23rd May – Ormsgill Centre Workshop
- 30th May – Health and Wellbeing Partnership
- 6th June – Education Discussion
- 8th June – Highways Advisory Sub Group
- 8th June – Barrow Resilience Group

4.3 In addition to these specific meetings, Members also hold ad hoc meetings and workshops as needed, and also continue to be kept informed through regular communications from the Area Manager and Community Development Team.

Area Working and Community Services Update

- 4.4 As Local Committee are aware, the team locally continue to work to support area planning activity and priority areas of work including Barrow Town Deal and Borderlands. Key areas are highlighted below for Members' information.
- 4.5 **Dalton Borderlands Place Programme** - The Economic Programmes team are working to develop a commission to appoint an external consultant who will help to shape the identified projects in the programme into Green Book compliant business cases. Each of the project proposals that have been put forward will be assessed against defined selection criteria and prioritised for inclusion in the Borderlands Town Investment Plan. Other funding opportunities will be considered for those projects which are not deemed eligible for inclusion in the Borderlands programme.
- 4.6 Once the consultant has been appointed, working groups (identified as 'concepts' in the place plan) will be established. The team are currently working to promote these working groups to encourage a range of interested organisations and individuals to join these to help develop the schemes. As part of this, a leaflet has been drafted to invite people to be involved with the Dalton working groups. The leaflet will be distributed (from mid-June) to local residents (via Dalton Town Council), local businesses and targeted organisations to invite them to attend one or more working groups.
- 4.7 The notes of the Borderlands Town Team meeting of 14th April 2022 are attached at Appendix 1 for information
- 4.8 The Dalton Borderlands Community Partnership continues to meet regularly and is supporting a range of work. It has also developed a community plan which includes several priorities with key projects to focus on which are being led by various partners on the partnership.
- 4.9 One of the key projects on the plan is the proposal to look at a pollinator scheme on the land behind Dalton Leisure Centre. This will be led by Cumbria Wildlife Trust with a working group to be set up with residents, partners, community groups to become involved in the project.
- 4.10 Barra Culture also awarded DACH £8k towards an artist in residence in Dalton to develop the Heritage Trail for Dalton. In addition, through Barrow Local Committee COMF funding £5k was awarded. The artist has been consulting and engaging with Schools including Dowdales has been part of their citizenship curriculum. There have also been volunteers from Signal Film & Media supporting with research and images for the website.
- 4.11 The Queens Jubilee bank holiday in Dalton saw the lighting of the beacon, various stalls in Tudor Square culminating with a Jubilee event at Dalton Castle. DACH, Dalton Town Council, Friends of Dalton Castle and many partner organisations led the event where over 400 people turned up to activities, singing, dancing, stalls etc with refreshments served by local businesses. A full update will be in Dalton Town Council annual report.
- 4.12 **Barrow Town Deal Community Hubs and Earnse Bay** – This continues to be a major area of work for the team and Members. Work is underway to develop a monitoring and evaluation plan for this work. This document will outline the key milestones, project expenditure, outputs and outcomes which

the project will be held accountable to meeting, and will provide a baseline to determine the impact this work. Members will continue to be kept updated on this. An update on each of these projects is outlined below.

- 4.13 Bram Longstaffe Hub – Procurement activity is being taken forward for the detailed design and contract administration roles for the Bram Longstaffe Community Hub. A capital delivery workstream group is being established and will input into the development of detailed capital designs. Detailed investigations into the current building condition are now underway and an advance contract for urgent repair and maintenance is being delivered, via the Cumbria County Council Corporate Maintenance function. Prior to delivery of the capital works, an interim hub is up and running in existing space and a range of activities are taking place.
- 4.14 The Bram Longstaffe Community Hub and the nursery on site will be facilitated by the 'Friends of Bram' group
- 4.15 Ormsgill - The Ormsgill Community Hub has been established and therefore acts as a 'pilot' for the other hub locations, although the activities at each hub will differ in character as the local community inform the priorities for each location.
- 4.16 A range of service delivery continues at Ormsgill Community Centre including: Adult Community Skills & Learning, Family Action, Health, Drop Zone, the library service and the post office service.
- 4.17 The Building User Group continues to meet regularly, having regular oversight of the day-to-day operations at Ormsgill Community Centre. A workshop has taken place (during May) with the Building User Group and a range of partners who deliver services from Ormsgill Community Centre to discuss the practicalities of service delivery at the centre including: what is currently working well, and what areas could be improved to help shape future working arrangements and ensure seamless delivery of activities for partners and the local community alike.
- 4.18 Ormsgill Stronger Together (OST) continue to be delivering lots of activity in the community. Recently they held a large Jubilee celebration day which received a lot of praise from their communities via social media.
- 4.19 The regular coffee mornings are proving popular with residents as they are able to get an inexpensive 'brew and bap' with a chance socialise. Other services are also attending these sessions to further support the health and wellbeing of the community.
- 4.20 The official Co – Op funded Community Fridge, launched Monday 2nd May - it has been extremely well received. To date nearly 5 tons of food has been saved from land fill and 100s of people have benefitted from it. Access to the freezer and cupboard goods is available three times a week, access to contents of the fridge and dry goods are available to anyone whilst the centre is open.



- 4.21 Given the workload involved in running the Community Fridge OST have enquired as to whether funding could be sought to employ a part time worker to help relive the burden. The Community Development team are working with CVS to look at this.
- 4.22 OST continue to develop comprehensive timetables of events for the year ahead, including a number of Summer Fun Days.
- 4.23 Work continues with property colleagues and Family Action to work on a license agreements and to establish what peoples' roles and responsibilities are in the management of the building and taking bookings outside of 9-5 Monday to Friday.
- 4.24 Town Centre Hub - Following the success of Barrow Borough Council's Levelling Up Fund application, consideration is being given as to how works to create the Town Centre Community Hub, can be incorporated into the Levelling Up Fund work, to achieve efficiencies and streamline delivery of the various works across the site. This approach would mean the Borough Council taking the leading role in delivery of the Town Centre Hub capital works, with Cumbria County Council retaining the role of project delivery body for the overall Community Hubs and Earnse Bay project. The decision to adopt this approach will be progressed via the formal Town Deal change control process.
- 4.25 Earnse Bay - Input from the community is vital to shaping the design of the Outdoor Centre. On 18 May further engagement was carried out with local school children (targeting schools not previously involved in the project), young people and the local community to discuss how individuals would envisage using the proposed space. The outcomes will better inform the project group about the development of an operational model, building design, and subsequent long-term plans for the project – from a community driven response. A full engagement plan is currently being developed for the project.



- 4.26 Consultants have now commenced RIBA 3 design work on the Earnse Bay Outdoor Centre and the surveys required for the design and subsequent planning application are in progress. The aim is to develop designs in June and July, gathering feedback for stakeholders as we go. A final stakeholder group meeting is planned for late July (date to be confirmed) prior to the submission of the planning application in September.
- 4.27 Work continues to progress delivery models for the Earnse Bay site and a visit has been arranged for the project team to a similar community building to understand running implications of the proposed green technologies. Work is also underway to explore the options for incorporating social value

into procurement. On 10 June a workshop was held with potential providers who may be interested in becoming strategic partners for the site, discussing opportunities to run aspects of the site and considering how the site can be made sustainable in the long term.

4.28 **Harri Bus Ward Tour and BeWell Fest** - The Harri (Health Advice Recovery Resilience Information) has almost completed the ward tour - the remaining wards to be visited are Hawcoat and Walney South. Walney South will be visited as part of the Walney Running and BeWell Festival on 25th September. Further details to follow.

4.29 BeWellFest 22 will be hosted by CCC/NHS and Mind at Barrow Raiders on Saturday 9th July.

4.30 **Pollination Sites – Cumbria Wildlife Trust project** – Following the decision at Local Committee regarding the allocation of the 2022-23 Environment Fund, the team have been working with Members to identify potential sites for the planting for pollinator's scheme. An update was also presented to Informal Local Committee on 21st June by Cumbria Wildlife Trust on how they will be taking this project forward.

4.31 Lots of Pollination sites have been identified across the borough and visited, and all sites will need to be soil tested & assessed for suitability prior to any planting by an ecologist. This will help manage expectations as to what can be planted and where. Some sites identified may simply not be suitable or may take years to fully flourish. Cumbria Wildlife Trust are hoping to come and visit the sites in the coming weeks and will be able to advise for each individual site and costings.



4.32 The vital part of the scheme is the Community Engagement piece, where they will work with local communities to educate and enable to maintain the sites going forward. Final sites will be agreed by Barrow Local Committee.

4.33 **Heritage Audio Trails** - More site meetings have been held, and more art and content are being created, ready to be installed along the routes along with sound poles. Installation of the Audio posts will begin in the Summer.

4.34 The following piece of poetry written by local writers Sally Ann Staunton and John Rennie for the audio project has been produced. This is what makes Barrow truly brilliant and a hometown to be proud of!



Link: https://www.youtube.com/watch?v=xP_bDKqPtOM&fbclid=IwAR1CVMqZWyhhAxx8liAX97ilth4gCA794qL-w9qjJVnKM6aPoE65089nje0

4.35 **Barrow Spring Mount Youth Group** - The Community Development Officer held a session with the youth group to look at Business Planning, the group are wanting to create a youth café for all youths to attend. The young people working on the project are from various wards across Barrow from Central to North Walney.

4.36 **Barrow Wheels 4 All Project** - A Wheels 4 All fun day will be held in Barrow Park this Summer holidays on 18th August – running FREE taster sessions throughout the day in Barrow Park.

4.37 On 17th August, there will be Wheels 4 All Volunteer training taking place for the day, again in the park using the Barrow Boat Shed as a base.

4.38 Job Advert to be launched shortly – 14 hrs per week, this exciting role will focus on creating regular inclusive cycling opportunities for disabled people and those leading inactive lifestyles from across the borough of Barrow in Furness.



4.39 **Hoops Basketball Centre** – Following discussions in Informal Local Committee, a productive meeting took place on 15th June, with the Chair of Local Committee, Community Development Officer, 3 trustees from Hoops, and County Council Property colleagues. The Property Team are going to work up a proposal for a 50-year lease and put forward to the Legal Team with a clearer boundary. Property will also look to get the top drive/ access to the centre repaired.

4.40 **Exercise on Referral – Barrow Exercise and Therapy Scheme BEATS** - We are now beginning to understand that the roots of health lie not in hospitals or GP surgeries, but in our people and communities. We need to be better at helping people to manage their own health and wellbeing, working with Barrow Leisure Centre, we have created the outline of an Exercise on Referral system for local residents.



4.41 The programme would include weight management, Pulmonary Rehab and Falls Prevention looking to have a holistic approach to health and wellbeing within the Leisure Centre.

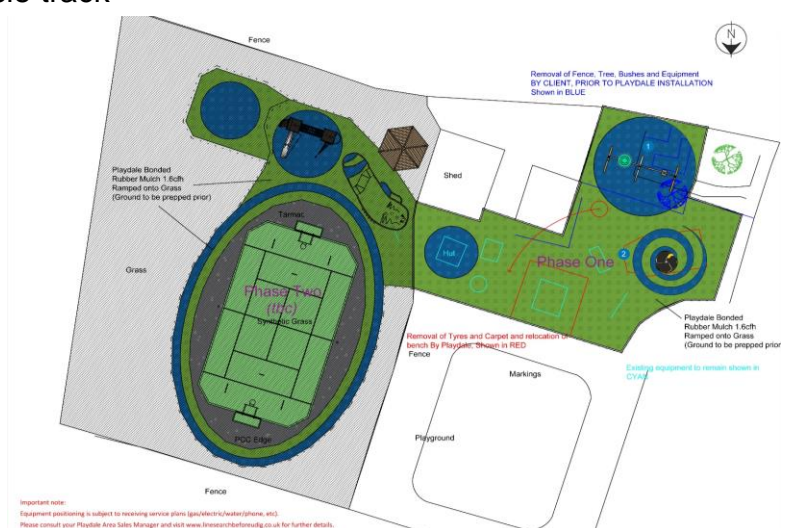
4.42 This has been presented at the Barrow Health & Well-being Forum, with the request that local Health Professionals work alongside us to ensure the programme fits the needs of the community and is bespoke to Barrow borough.

4.43 We have now formed a small group and are going to work together to create a business plan and identify possible funding streams.

4.44 NB: It is estimated that 62% of adults in England are now overweight or obese. Direct costs of obesity to the NHS have been estimated at £5.1 billion, annually this has now been updated to £6.1 billion to take into account inflation over the past decade looking further forward, by 2030 costs are likely to increase by a further £2 billion.

- 4.45 **Green Heart Den/ The Well** - Following the success of the Food Club and garden, we are having a Community Growth project to inspire local families to grow their own feed from seed, with the Support of The Green Heart Den and their volunteers
- 4.46 FREE Growing kits will be available for local families who are using The Well Food Scheme/ Family Action Services, there will also be Open Days at the Green Heart Dean – consisting of education and the promotion of home growing.
- 4.47 Not only should this harness a Growing interest amongst the community, but it will also encourage people to connect with the FREE garden and plant at Green Heart Den, a Place of Welcome for all.
- 4.48 **GMB South Cumbria Sports Awards – Service to Sport** - The awards committee is a small group, chaired by Terry barker and it has been agreed at this year the evening will focus on ‘Service to Sport’, celebrating the unsung volunteers across our sports in the borough. The evening is being held 14th October at Barrow Rugby League Marque.
- 4.49 This is being arranged by a group of local volunteers including Matt Davies (former Sports Editor of the Evening Mail) and John Knagg, Karen Scarr, Active Cumbria and the Community Development Officer.
- 4.50 **George Haswell School, Walney** – The Community Development Officer met with the new Head of George Haswell School, Cllr Burns & Active Cumbria to discuss and look at the schools plans for extending their outside space.
- 4.51 The school has very little space outside, and they are trying to maximise every area they can. They are somewhat restricted in where developments can take place due to parking for minibuses and boundary fences.
- 4.52 The plans are to develop the area behind the school, including the yard and the field. The plan below is in 3 phases,

- Phase 1 - Planned and funding allocated swing, roundabout area
- Phase 2 - MUGA and cycle track
- Phase 3 - Additional equipment and outdoor classroom around the outside of the MUGA
- Phase 4 - A central courtyard area at the front of the school, cover to an existing structure and regulation equipment (not on this plan)



Covid Response and Recovery

- 4.53 The Barrow Local Resilience Group continues to meet six weekly and discusses a range of issues and actions. The focus remains very much on the group's existing priority areas below, but with increasing focus on Cost of Living:
- Health and wellbeing including mental health
 - Children and families
 - Financial Wellbeing
 - Food and other urgent needs
- 4.54 At the last meeting the group agreed to refresh and “relaunch” the Group, recognising that the focus was now less about Covid-19 but rather the wider priorities above. The value of this group as a key partnership for the Borough was flagged as it brings together a wide range of individuals and organisations from all sectors, and also links into the other key partnerships such as the Health and Wellbeing Partnership. The work the group has done around collaborative bids, supporting joint working and sharing information was also recognised. Frequency of meetings will also be kept under review.
- 4.55 The Community COVID Recovery Group also continues to meet monthly. This includes the Community Resource Distribution Points (CRDP) (3 x food hubs – Barrow Island, Spring Mount and Dalton) and wider partners such as ICC, Age UK, Barrow Foodbank, Family Action and the Barrow Advice Hub.
- 4.56 The objectives of the CRDPs are to support people with needs whether that is emergency goods or additional social/welfare support. The relationships and trust will still be maintained by the CRDPs with the professional support through a multi-agency approach where required.
- 4.57 The CCRG is organically developing in line with community need which is now supporting the communities through cost of living. The CCRG is in a fortunate position that it is able through the partnership to fully understand, prepare and respond flexibly to community need. Through this it can then feed into the more strategic partnerships such as the Barrow Resilience Forum, Barrow Health and Wellbeing Partnership and Barrow Children's Trust Board. The partnership acknowledges that COVID has not gone away however it needs to rename with a suggested title of the Community Poverty Working Group.
- 4.58 The key issues are still now to support people for food, fuel, toiletries and emergency goods. All families and individuals are feeling the pressures from the cost of living, however feedback is that there are newly vulnerable families and individuals who although are working, need support through organisations such as Barrow Foodbank. As we head into autumn and winter months the pressures will increase due to the need for communities to keep warm, have food and clothing. Prior to Autumn, summer sees the longest period for children at home and the cost of buying school uniforms. The Holiday Activity Food Programme will be running through the summer months to ensure the most vulnerable children and families are supported.

- 4.59 The key short-term concern is how the statutory and third sector can support communities during the most difficult winter months, and there is a need to develop a plan that is short, medium and long-term. It is also proposed to hold a Cost-of-Living Workshop.
- 4.60 For the short term it needs to be identified who and how to support communities with the basics of food, keeping warm, clothing, and identify gaps and resources/funding. Following this to look at options how to engage with communities and support them in line with the short-term plan. One of the earliest actions is to develop a local cost of living directory that focuses on food, clothing, fuel, finance. Using the directory as a tool for support and signposting; ensuring that all organisations sign up to making every contact count enabling a more supported and co-ordinated approach.
- 4.61 As updated at a previous Local Committee meeting, a key issue that has and is emerging is the need to support individuals and families with emergency items due to a change in circumstances. The emergency referral process co-ordinated by Walney Community Trust through Spring Mount was launched at the end of September. This was to provide a co-ordinated single distribution point for supporting families and individuals across Barrow Borough. Included in the referral process has been identifying existing agency support alongside any additional financial support to ensure the family or individual is receiving the right support, looking at the root cause of the issues and prevention going forward. A verbal update will be given at the meeting.

Children and Families

- 4.62 The Barrow Children and Families Partnership met on 20th May and held a wide range of detailed discussions. These included:
- A presentation from the County Council Children's Services Senior Manager regarding the work that has been undertaken around "No Wrong Door" (Intake Team).
 - Data Performance Deep Dive
 - An update from the Early Early Help and Vulnerable Children Task Group
 - An update from the Furness Youth Work Partnership
- 4.63 **Young People's Multi-Agency Partnership Programme** - Members will be aware that the town centre has been identified as a 'hot spot' area through the Local Focus Hub due to the anti-social behaviour, crime etc.
- 4.64 Many projects that work with young people are short-term or focus on a particular genre such as sport. Based on the varied activity through the Holiday Activity Food Programme it was agreed to look at a new collaborative initiative on a longer-term basis targeting the town centre area.
- 4.65 Members agreed to award funding towards the above from its Universal Provision 0-19 budget from 2021/22 and 2022/23 budgets. Further funding of £20k was secured from Barrow Borough Council Hardship Fund providing a total funding allocation of £70k.

- 4.66 A workshop was held with providers – Barrow AFC, Barrow Raiders, Barra Full, Horizon Music Studios, Drop Zone who agreed to take a collaborative approach to working with young people. Current issues, areas and existing assets and funding were identified.
- 4.67 The first full project partnership meeting has been held and the key outcomes are:
- The project can sit under the umbrella of Furness Youth Work Partnership which has terms of reference, policies, safeguarding and represents the relevant youth organisations that work with young people.
 - The partnership can still be a project working group as a collaborative, and bring in any additional relevant specialist providers to deliver activities and events.
 - Funding can be maximised as each provider would be able to access or already have existing funding to support activities.
- 4.68 There will be a scheduled activities planner where the various providers will start to deliver different activities over the next few months to include young people to engage, participate etc and start to capture ideas from them to inform future activities over the forthcoming 12 months and to inform a large event at the end of August. Existing events can also be utilised such as Festival of Transport. In addition, young people will be encouraged to give ideas around improving the town centre area such as looking at the graffiti, space for young people to meet
- 4.69 **Love Barrow Families – Brisbane Park Satellite Hub** - Love Barrow Families (LBF) has been working in the Hindpool area and through this work have developed a Hindpool Community Group led by the LBF community champion. The community group has been meeting in Hartington Street Church who have provided a free venue however this is becoming too small. To date they have been running activities through the Holiday Activity Food Programme, family fun Saturday afternoons, every other Wednesday community lunches. They now have many residents and families that are part of the community group who have identified the needs, support and activities that they would like to take forward that would support their Hindpool community. There is a passionate and engaged community who are in a position with the support of the LBF community champion to drive some positive changes in the Hindpool community.
- 4.70 The additional and important key element of work in the Hindpool area is the work that LBF have been undertaking in Brisbane Park Infant School. The LBF community champion linked in with the School through the Hindpool Community Group undertaking a litter pick and improving the school garden. This started to build the relationship and trust between the organisation and the school, and the community champion is supporting families in the school setting. As the community champion is male this has been seen as a positive male role model for the school. There are several dads who are single carers looking after children and a dads group is being formed. It is very well known that many children following COVID are struggling with

emotional wellbeing, self-confidence, resilience, speech, language etc. Schools are not able to address all the issues and to support children and families with a safe space to play, interact and support each other is integral for families to make positive changes.

- 4.71 In Hindpool unlike other areas where there are hubs that can work alongside Schools and provide additional emotional wellbeing support to families; there is no identifiable community space outside of the school. In other areas there are the Town Deal hubs and other hubs such as Spring Mount, Sacred Heart. Within the proximity of Brisbane Park School there is Hindpool Nursery, St. James Juniors, Hindpool Tigers (LBF can use their facility) Hindpool MUGA, Brisbane Park Annex. However, within this small area where the different organisations are working with families there is no community building to bring families, residents together and young people who currently use Hindpool MUGA.
- 4.72 The proposal from Love Barrow Families is to open and pilot a satellite community hub at Brisbane Park Annex. The hub would operate under the same values and ethos of Love Barrow Families and the users asked to consider the name of the hub to provide the separate identity.
- 4.73 The opportunity that this would provide to the families and communities would be an identifiable family and community space, build and develop on the current activities as below.
- Through collaboration with Asda, Tesco for the Fare Share scheme, the local corner shop on Bath Street donating and working with Barrow Foodbank LBF would support families with food and deliver cooking, eating and socialising sessions based on basic and cheap recipes.
 - Further suggestions are clothes banks and LBF already support males with the loan of free second-hand suits for interviews and other occasions.
 - LBF would open the hub when families are dropping children off at School as many single parents including dads just need somewhere to go for a morning and feel supported rather than being isolated at home with all the pressures that they are faced with. During school holidays this would also enable the provision of the HAF programme and support for vulnerable children not necessarily meeting the criteria for free school meals.
 - The building will also lend itself to providing the space for safe play, therapists to deliver speech and language etc as mentioned further above in the report. Hubs and the different organisations are being identified as key support mechanisms to the community and schools as schools are tackling all the emotional and wellbeing issues in addition to providing an education to children.
- 4.74 Following discussions with Property there is support for LBF to pilot the project in Brisbane Park Annex. It has been agreed to draw up a licence for up to twelve months at nominal rent but with LBF paying a service charge. Property have undertaken inspections and the boiler room asbestos that was earlier identified has been removed and completed. There are further servicing and maintenance checks to be undertaken to make the building compliant prior to occupancy.

- 4.75 As members will be aware community and voluntary organisations are frontline providing support in communities either at a very early help stage or just preventing situations and issues from escalating and hitting crisis point. Providing this support means that organisations are constantly fundraising.
- 4.76 LBF will need start-up costs for the project in terms of running costs for the building eg heating, lighting, water, insurance; The running costs considering increased utility costs is probably their main concern. In addition, they will need to purchase where they are unable to borrow, furnish and decorate the building and volunteers in the community group are on board to undertake this. It is important that the building is clean, welcoming and presentable.
- 4.77 In order to support LBF to set up and develop a satellite hub the request is for £25k start-up costs which comprises £15k from 0-19 service grants and £10k from community subject to the licence being agreed by CCC and LBF and all service and maintenance checks being completed.
- 4.78 This project meets the Council plan priorities and local priorities in ensuring children are kept safe and that families emotional and physical wellbeing is supported. Barrow Local Committee is therefore asked to consider £15,000 funding from its 0-19 services grants and £10,000 from community grants for Love Barrow Families for a satellite hub project at Brisbane Park Annex.
- 4.79 **Right2Work CIC** - Right2Work is a Community Interest Company set up by The Oaklea Trust whose aims are to promote young people's personal and social development and enable them to have a voice, influence and place in their communities and society as a whole. The CIC provides needs-led emotional, social and practical support to families where a child/young person has additional needs, anxiety or depression or learning and/or physical disabilities or those disengaged. Through targeted interventions this supports young people with career choices and preparation for adulthood.
- 4.80 The young people that they work with are those who are beginning to disengage with school/college (14-18 year olds) life for whatever the reason. This can be around anxiety leading to low self-esteem, bullying leading to low attendance levels, health conditions, grief and bereavement, family and relationship issues.
- 4.81 The group offers appropriate support whether that is in or outside a school setting, to enable young people to realise their potential and to look forward to their futures with hope and optimism.
- 4.82 The CIC will provide outdoor placement for small groups (x 6 young people) and real workplace environments via in-work support. They will undertake individual vocational profile and task analysis for each participating young person as well as employability and functional skills qualifications available.
- 4.83 Right2Work uses established networks with Job Centre Plus, Employers, Local Employer Partnership, Transition Social Work Teams, Psychiatrists and Psychologists, CAMH Teams; Careers Advisers to support the progression of the young person.
- 4.84 In 2020/21 CCC Local Committees in Allerdale, Carlisle, Eden and South Lakeland supported Right2Works Youth Futures Programme (CCC Barrow Local Committee 0-19 grants budget was fully committed at the time of application). This has demonstrated outstanding outcomes and has made a significant impact on the employability of a group of young individuals within

Cumbria. The CIC has received funding from each of the other Local Committees once again for the project. Attached at Appendix 2 is the feedback leaflet of young people's outcomes.

- 4.85 The CIC is applying for funding of £11,088 which would provide support for 12 young people in the Barrow area. The schools that they will work with are Furness Academy, Walney School and George Hastwell.
- 4.86 The CIC has specifically linked the funding to 'cost per beneficiary' as the applications that are being submitted to the county Local Committees obviously cover different geographical areas and varying levels of anticipated demand.
- 4.87 Members can decide the numbers they wish to support. One local area is funding support for 5 young people, another 7, other areas are supporting 12. It also means that if members/funders are unable to fund in a particular area that the Youth Futures project would not be offered in that area. The costs associated for each young person are for salary and associated on-costs such as room hire, equipment, stationery etc.
- 4.88 This project meets the Council priorities in supporting young people with increased participant confidence, improved participant well-being and resilience, improved participant knowledge of career options, improved family relationships, participants enabled to be effective citizens irrespective of age, disability or disadvantage.
- 4.89 It aims to improve outcomes from anxiety - Low self-esteem - Bullying - Low attendance levels - Health conditions - Grief and bereavement - Family and relationship issues.
- 4.90 By doing this it aims to support participants outcomes to return, to school setting, pathway into FE colleges, supported Internships, employment, access to work funding to support maintenance of job/supported internship outcomes.
- 4.91 In order to support young people Barrow Local Committee is therefore asked to consider funding 6 places at a cost of £5,544 0-19 services grants for Right2Work CIC.

Health and Wellbeing

- 4.92 The Barrow Health and Wellbeing Partnership met on 30th May 2022 and had an in-depth discussion on a number of issues including:
- Population Health Investment Fund
 - Choosing Well When Unwell
 - BeWell Fests
 - Exercise on Referral
 - Key linked partnerships including the Local Resilience Group, Children and Families Partnership and the Covid Recovery Group
 - Poverty Truth Commission
 - How to align and join up funding streams and key priority issues and areas to maximise benefits to communities and organisations

- 4.93 As part of this discussion it was felt that the group needed to ensure that it was proactive in its approach and worked closely with key organisations and partnerships to ensure that things were joined up and able to be driven forward appropriately. As part of this it was agreed to move the meetings to monthly, review the membership to include other key partners such as Active Cumbria, and to develop a forward plan to enable the group to better plan.
- 4.94 It was also agreed that a key element of the group's planning needed to be around the Population Health Investment fund to ensure that the maximum benefits could be derived from this to support communities in the borough. How this funding also aligned with other potential funding streams such as Shared Prosperity Funding was also explored.

Barrow Libraries and Archive Service

- 4.95 The library and archive centre continue to be busy working on a range of activities and projects taking place, details of a number of these are outlined below.
- 4.96 Barrow Library celebrated Diversity Month in June showcasing new book collections. A book list was produced for Refugee Week providing moving and thought-provoking books exploring what it means to seek refuge. For Pride Month, fun, quirky and moving books written by and/ or featuring members of the LGBTQ+ community. Informative and thought-provoking books celebrating the lives and stories of the Windrush Generation and brilliant books written by and/ or featuring Neurodiverse characters. Our Outreach Officer was interviewed by BBC Radio Cumbria to talk about the collection and library offer in Barrow. We also supported Empathy Day to help everyone to understand and experience transformational power of empathy through stories.
- 4.97 Barrow library staff took part in Furness Pride event with a fun family story time on 14th May and provided a very colourful exhibition of knitted hearts in the foyer of the library.
- 4.98 During half term holidays our partner Wordsworth Trust delivered Rucksack and Rhymes and Springtime Gardens stories and craft sessions for our younger customers.
- 4.99 The Queen's Jubilee has been the main feature with the all the libraries in the group offering Royally Good Activities leading up to the day and into June. Children were invited to choose a 'royally good read' and take part in drop-in activities such as treasure trails and craft activities, write a letter to the Queen and decorate a postcard or a cupcake for our 'if I was Queen for the day' exhibitions. We also encouraged young people to take a 'Royally Good Recipe pack' home to make a family tea! This was through the Feed and Read scheme and was available at Barrow, Roose, Walney and Askam Libraries. In our foyer area, we showcased the lovely creative work to commemorate the Jubilee with an exhibition provided by Oaklea Trust.
- 4.100 Barrow Library was invited to take part in a regional Jubilation project alongside 21 other libraries in the North West consortium. Keen to take part we put ourselves forward and were selected to work with an artist from Manchester who visited us for the day on 16th June. We were asked to invite a local community group with whom we currently work and we chose Age UK. The group were offered gentle creative writing exercises whilst enjoying

tea and cake. Local schoolchildren were also invited. An anthology of all the celebration stories collected on the day will be produced and put into a



physical book to be made available at the library and also an online copy through the library Borrow Box service.

- 4.101 Barrow Library supported a Take Back event hosted by CCC Waste Management Team to allow local people to return aids for daily living. Barrow has been identified as a community having a significant number of aids no longer required such as stools, chairs, commodes etc and the library was identified as a central and accessible place to return items. The take back event ran from 21st- 26th June.
- 4.102 Staff have been supporting local refugees and asylum seekers joining them into the library and continuing to welcome them at the English Café. Our Library Development Officer has produced an information sheet for Ukrainians to access translation services for the County Council website and links to access information on our stock and digital resources There is also information for parents to access Book Trust reading guides in Ukrainian. The Library & Customer Manager attends to local Refugee group meetings.
- 4.103 National Crime Reading Month - Barrow Library held a Crime Writers in Conversation event with local Authors Helen Phifer and Tom Ashton. The event was live streamed through the libraries Facebook page.
- 4.104 The Barrow Full Nora's Project was displayed on the side of Barrow Library facing onto Duke Street.
- 4.105 Similarly the Archive has been very busy with this period, and outlined below are some of the activities tha have taken place
 - Our Archivist visited Yarlside Academy Year 5 to talk about Victorian Barrow and North Walney Primary School Years 5 and 6 came to Archive Centre for a talk on Victorian Barrow also.
 - In June our Archivist visited Victoria Juniors Academy Year 5 (2 classes) Victorian Barrow. And Coniston Primary School to talk about the life and work of Alfred Wainwright.
 - Exhibitions have included visits of Queen Elizabeth II to Barrow 1956-1998, the 1921 Census: what you can learn from it. This provides details of 2 local people for whom the archives have documents (Sarah Bull, Midwife and Arthur Lowes, policeman) and a poster on Bram Longstaff who should appear but doesn't.

Local Committee Budget

4.106 Members have continued to monitor and review their budgets in line with the significantly changed situation, including the additional funding that was received to support communities and activity during the pandemic. The full discretionary budget delegated to Local Committee is detailed in Appendix 3, providing the latest financial position including the committee expenditure and the remaining unallocated resources up to 21 June 2022.

5.0 OPTIONS

5.1 Local Committee can choose to support the recommendations outlined in this report, amend them and choose to commit different levels of funding within their delegated budget, or not to accept the recommendations

6.0 RESOURCE AND VALUE FOR MONEY IMPLICATIONS

6.1 There are no financial implications arising from this report. Where grant approval has been sought, the values all fall within the Local Committee allocated budgets as shown in Appendix 3.

7.0 LEGAL IMPLICATIONS

7.1 There are no direct legal implications arising from this report.

8.0 CONCLUSION

8.1 This report provides the Local Committee with a comprehensive update on its Communities budgets and related matters delegated to the Committee

Dawn Roberts
Executive Director - Corporate, Customer and Community Services

20th June 2022

APPENDICES

- Appendix 1 - Borderlands Town Team notes***
- Appendix 2 - Oaklea Youth Features Leaflet***
- Appendix 3 - Local Committee Budget***

Electoral Divisions: All Barrow

Executive Decision

Yes	
-----	--

Key Decision

	No
--	----

If a Key Decision, is the proposal published in the current Forward Plan?	<input type="checkbox"/>	<input type="checkbox"/>	N/A
Is the decision exempt from call-in on grounds of urgency?	<input type="checkbox"/>	No	
If exempt from call-in, has the agreement of the Chair of the relevant Overview and Scrutiny Committee been sought or obtained?	<input type="checkbox"/>	<input type="checkbox"/>	N/A
Has this matter been considered by Overview and Scrutiny? If so, give details below.	<input type="checkbox"/>	No	
Has an environmental or sustainability impact assessment been undertaken?	<input type="checkbox"/>	<input type="checkbox"/>	N/A
Has an equality impact assessment been undertaken?	<input type="checkbox"/>	<input type="checkbox"/>	N/A

N.B. *If an executive decision is made, then a decision cannot be implemented until the expiry of the eighth working day after the date of the meeting – unless the decision is urgent and exempt from call-in and necessary approvals have been obtained.*

PREVIOUS RELEVANT COUNCIL OR EXECUTIVE DECISIONS
[including Local Committees]

No previous relevant decisions

CONSIDERATION BY OVERVIEW AND SCRUTINY

Not considered by Overview and Scrutiny

BACKGROUND PAPERS

No background papers

REPORT AUTHOR

Contact: Tracey Ingham 0790 1884620, tracey.ingham@cumbria.gov.uk